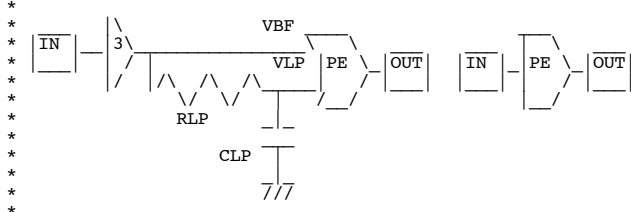
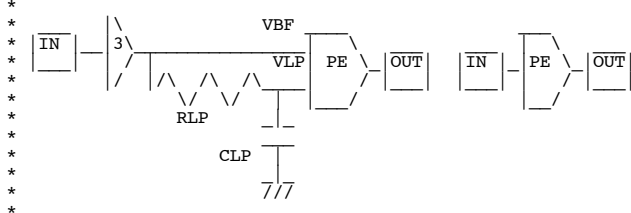


=====NEG_Edge=====



```
.SUBCKT NEG_E IN OUT
BBUF VBF 0 V = u( v(IN )-.5 )
RLP VBF VLP 10k
CLP VLP 0 50n
BNOR OUT 0 V = 1-u( u(v(VBF )-.5)+u(.5 -v(VLP ) ) -.1)
.ENDS NEG_E
```

=====POS_Edge=====



```
.SUBCKT POS_E IN OUT
BBUF VBF 0 V = u( v(IN )-.5 )
RLP VBF VLP 10k
CLP VLP 0 50n IC=0
BAND OUT 0 V = u( u(v(VBF )-.5)*u(.5 -v(VLP ) ) -.1)
.ENDS POS_E
```

.end