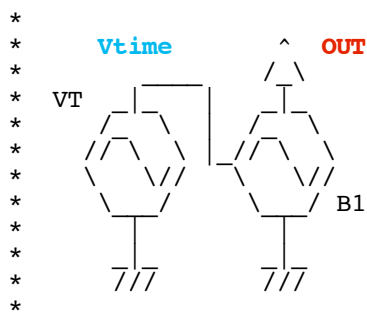


PWM_Wave_Balanced

* dsauersanjose@aol.com 5/07/08
* www.idea2ic.com

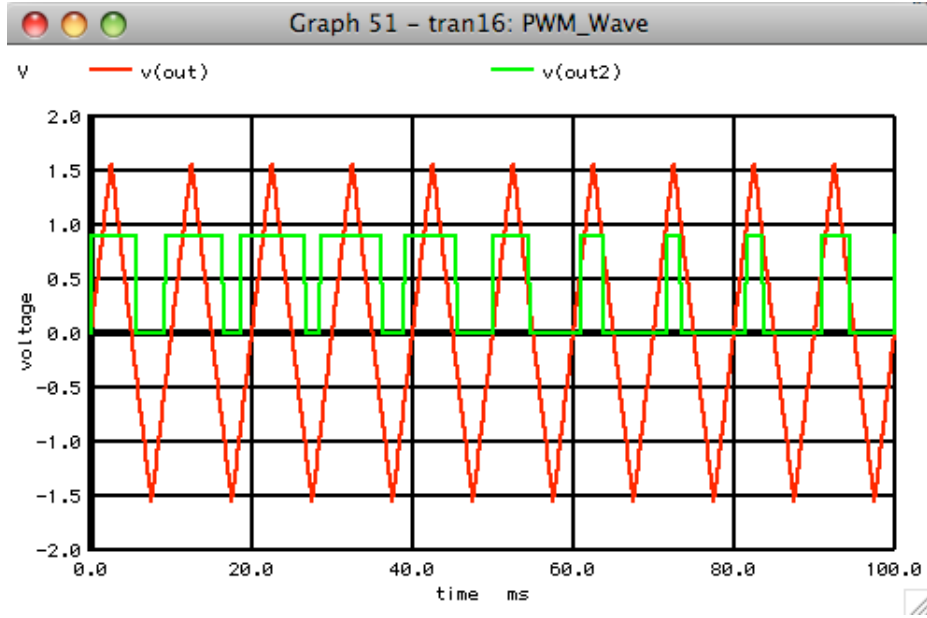


```
VT      Vt      0      PWL( 0 0 1 1 )
B1      OUT     0      V = 2*acos(cos(3.1416*100*v(Vt)))/3.1416 - 1
B2      OUT2    0      V = .9*u( 2*v(out)+sin(3.1416*20*v(Vt)) )
```

```
.control
run
set pensize = 2
plot v(Vtime)
plot v(out) v(out2)
.endc
.end
```

=====**END_OF_SPICE**=====

To Covert PDF to plain text click below
<http://www.fileformat.info/convert/doc/pdf2txt.htm>



***#1=====WinSpiceVersion=====**

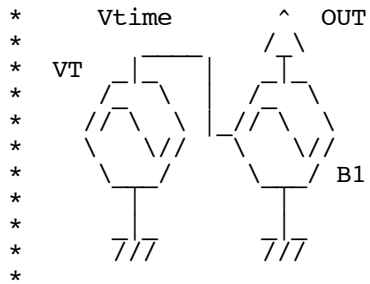
PWM_Wave_Balanced

* dsauersan jose@aol.com 5/07/08

* www.idea2ic.com

*

*



VT Vtime 0 PWL (0 0 1 1)

B1 OUT 0 V = asin(sin(3.142*200*v(Vtime)))

B2 OUT2 0 V = .9*u(v(out)+sin(3.142*20*v(Vtime)))

.tran .1m 100m 0 .1m

.control

run

set pensize = 2

plot v(Vtime)

plot v(out) v(out2)

.endc

.end