

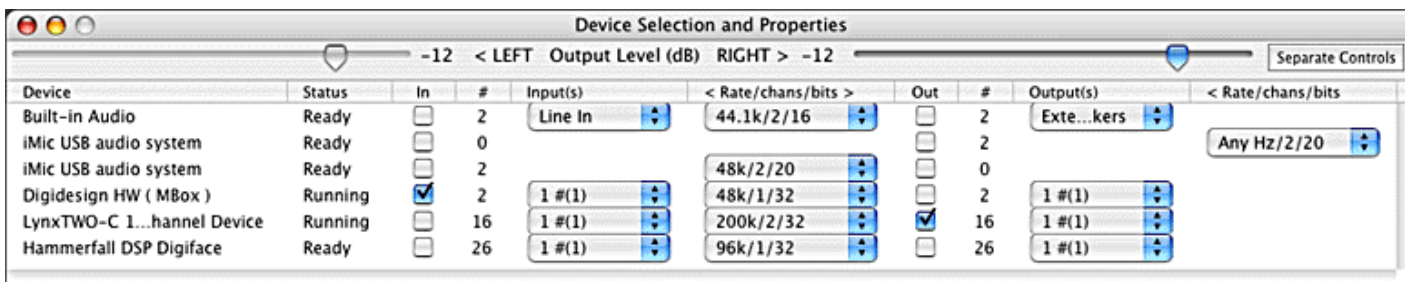


[[Support](#)] [[Product Info](#)] [[Downloads](#)] [[Ordering](#)] [[Home <www.channld.com/software.html>](#)]

Mac the Scope

Latest version: Mac the Scope 4X 4.28. Compatible with Mac OS 10.2.6 through 10.5 ("Leopard").

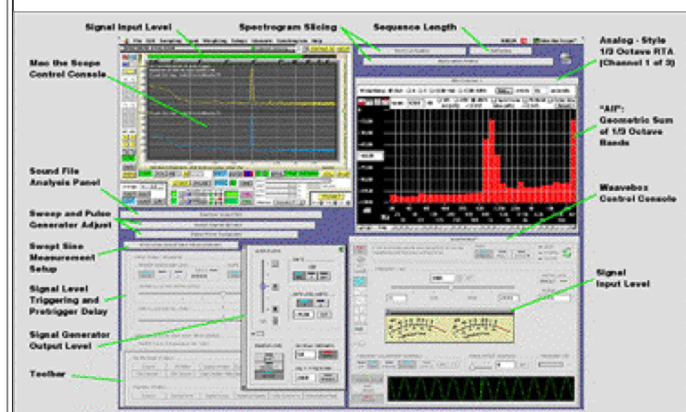
Mac OS X native - Mac the Scope 4X with CoreAudio support:



(Multiple USB interfaces possible with USB PCI card, as above)

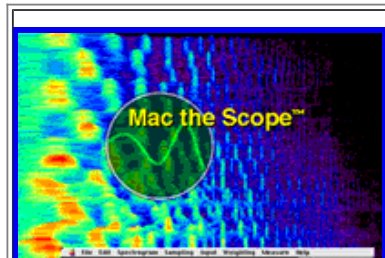
Professional quality signal analyzer, vector trace oscilloscope and 1/3 octave RTA - includes a spectrogram / sonogram display and a versatile, easy to use, precision [waveform and signal generator](#)

Mac the Scope 4X / Waavebox 1.73



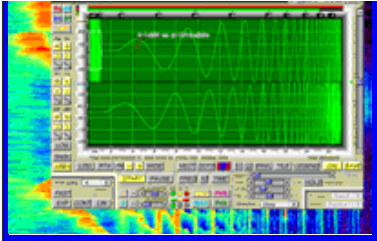
- Customizable Software Features: license only what you need*
- Multithreaded i/o and processing kernel
- Improved, faster, [precision swept sine measurements](#)
- [Waavebox signal generator](#)
- Ultra-flat pink noise (+ / - 0.15 dB, 20 Hz - 16 kHz measured with 1/3 octave RTA); switchable low cut filter (18 Hz)
- 1/3 octave RTA frequency range has been extended to cover bands to as low as 2.5 Hz - while providing nearly perfect amplitude accuracy (+ / - 0.05 dB, 20 Hz - 16 kHz). The RTA uses [digitally synthesized, true bandpass filters](#) that surpass crude, hybrid FFT - based RTAs (try measuring a swept sine signal with an FFT based RTA...)
- Detailed information about all features is provided in the documentation installed with the software

*Mac the Scope demonstration/evaluation software easily can be configured with the exact options you are interested in, so that you may evaluate the software as if it only contained those options. Instructions are included with the [demonstration/evaluation software](#)



Mac the Scope uses:

- Macintosh native (16 / 24-bit) input and output for audio frequency analysis (nothing extra to buy)
- **or** use third party input devices (not limited to audio frequencies)
- **or** analyze AIFF, Sound Designer II / interleaved binary files - again, not limited to audio frequencies - arbitrary sample rates and word sizes (8, 16, 24, 32 bits)



The Console user interface intentionally is designed to resemble a traditional 'scope. Modality is avoided where possible, thanks to the Macintosh user-event-driven paradigm. The scope Console is supplemented, where appropriate, with other configuration panels.

The interface is designed to present the most commonly-used features in a simple, accessible manner. Settings can be changed at will, without having to navigate through a series of menus or dialog boxes. Returning to default settings is an easy, one-click operation, and custom configurations can be saved for quick recall.

Our international customer base includes **Audio Professionals and Enthusiasts / Hobbyists:** sound reinforcement, loudspeaker measurement and design, listening room analysis, audio recording analysis; **University / Government / Industrial Laboratory Research:** physics, chemistry, medicine, psychology, animal behavior, mechanical engineering; **Academic Instruction:** chemistry, physics, music. Multi-license, multiuser network server installations are available.

- [Click here to see Mac the Scope screen shots](#)
- See our [Ordering](#) page for links to pricing information and special offers
- [Click here for user comments and links to product reviews](#) - or just try the software yourself: [download](#) and test drive a hands-on, functional demo of the latest release (includes illustrated documentation).
- Additional product information is provided in the Specification and Measurement documents on the [Support](#) page.

[[Support](#)] [[Product Info](#)] [[Downloads](#)] [[Ordering](#)] [[Home <www.channld.com/software.html>](#)]