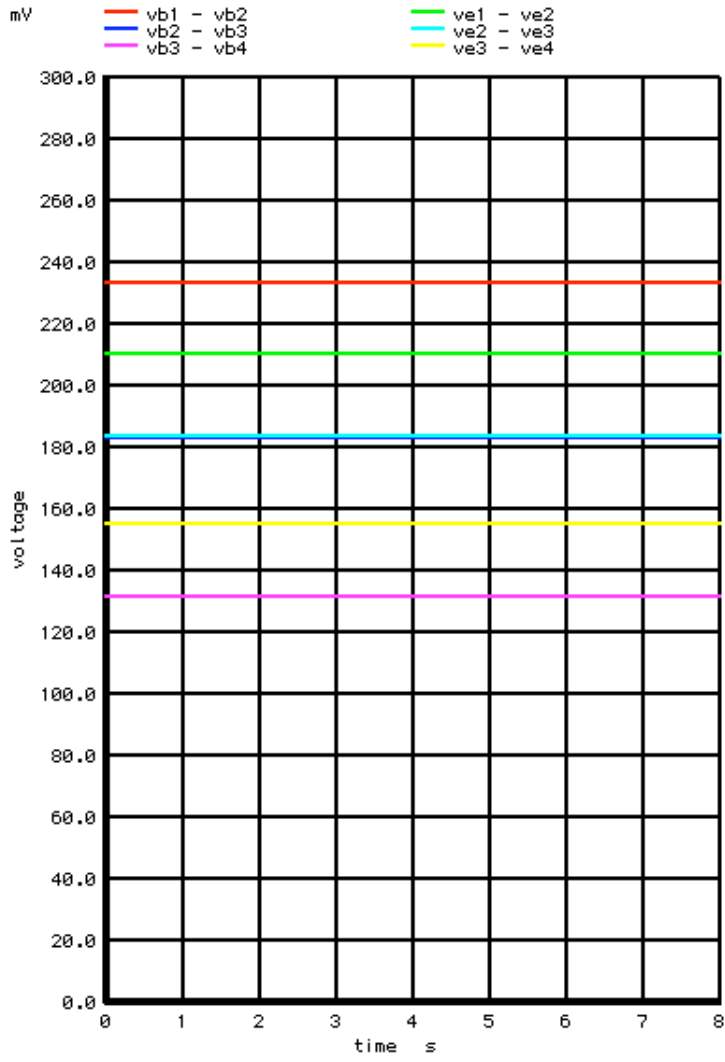


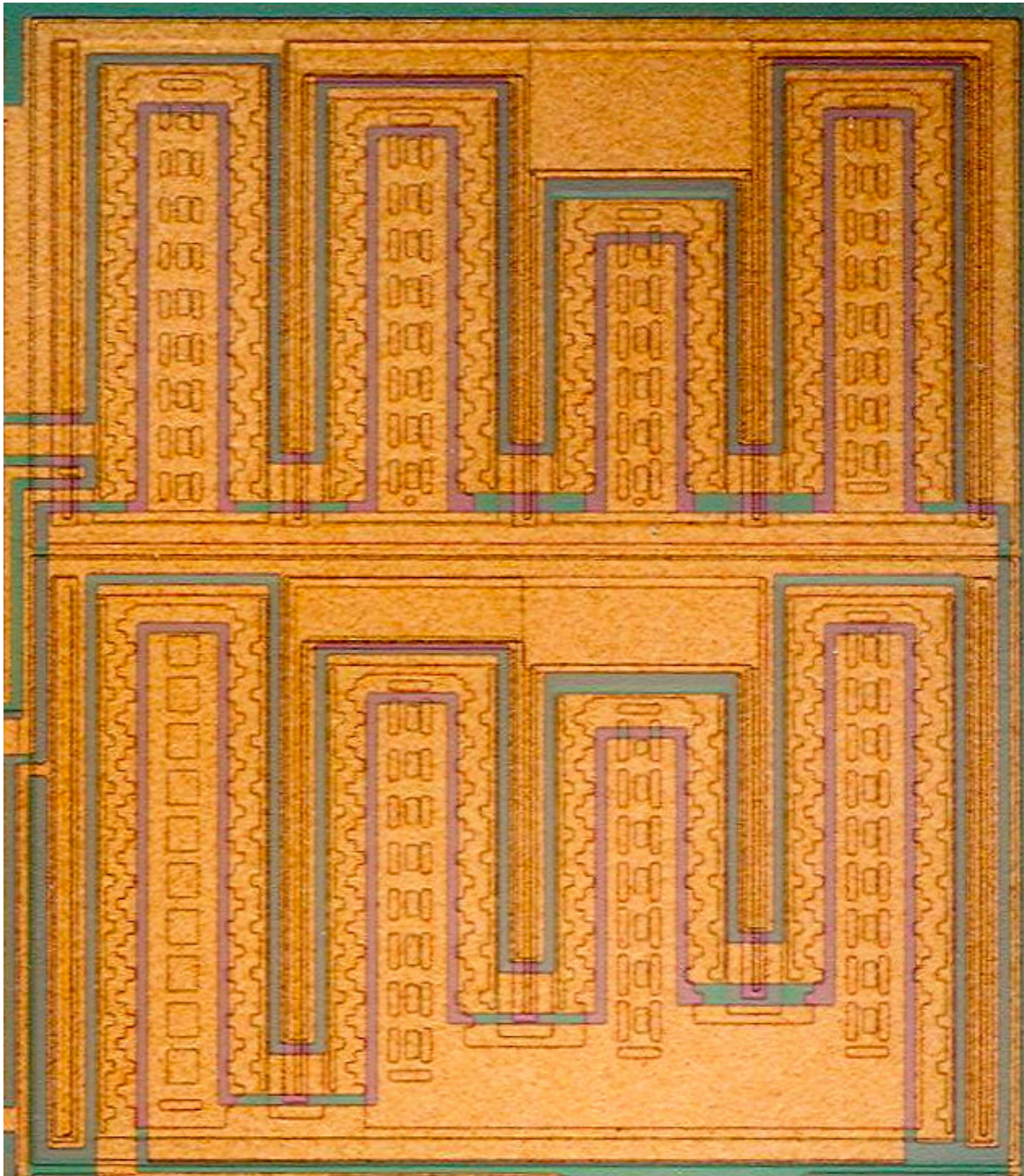




Graph 60 - tran102: PINCH\_RESISTOR2



The current in all the transistors is within +/- of the average. However the layout for the actual output transistor went to even further lengths to encourage all transistors to draw the same current.



In the actual output transistor layout the IR drop in the metal is also of the same magnitude. The output transistors were designed such that at 5 Amps, every transistor region would see both the same current the same environmental 250mV of IR drop. Where the IR drop would take place would differ between the transistors.



