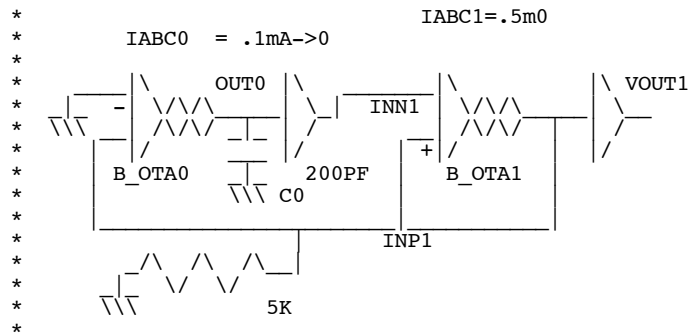
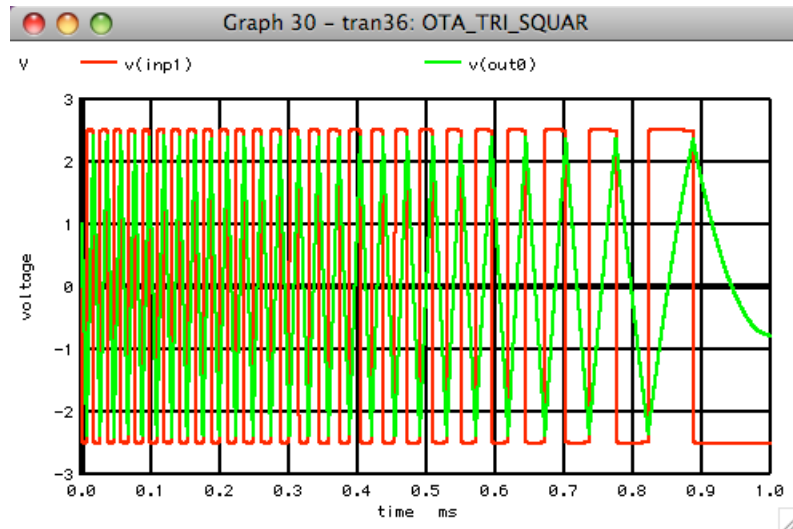




which was practically functional from 1Hz to 1MHz.



Part of the reason for the LM13600 version was to be able to exploit this six order of magnitude dynamic range. At the time the LM13600 was designed, a function generator that was handy to find in the lab was not better.



Today, the transistors are much much faster and can work from milli Amps to femto Amps. Thats twelve order of magnitude. And in the BiCMOS processes, input buffers can have the impedance of glass. It used to be an Analog joke that linear was in the Hz to GHz business. Today it might be possible to build a VCO that can operate at those frequency ranges using only internal capacitors.