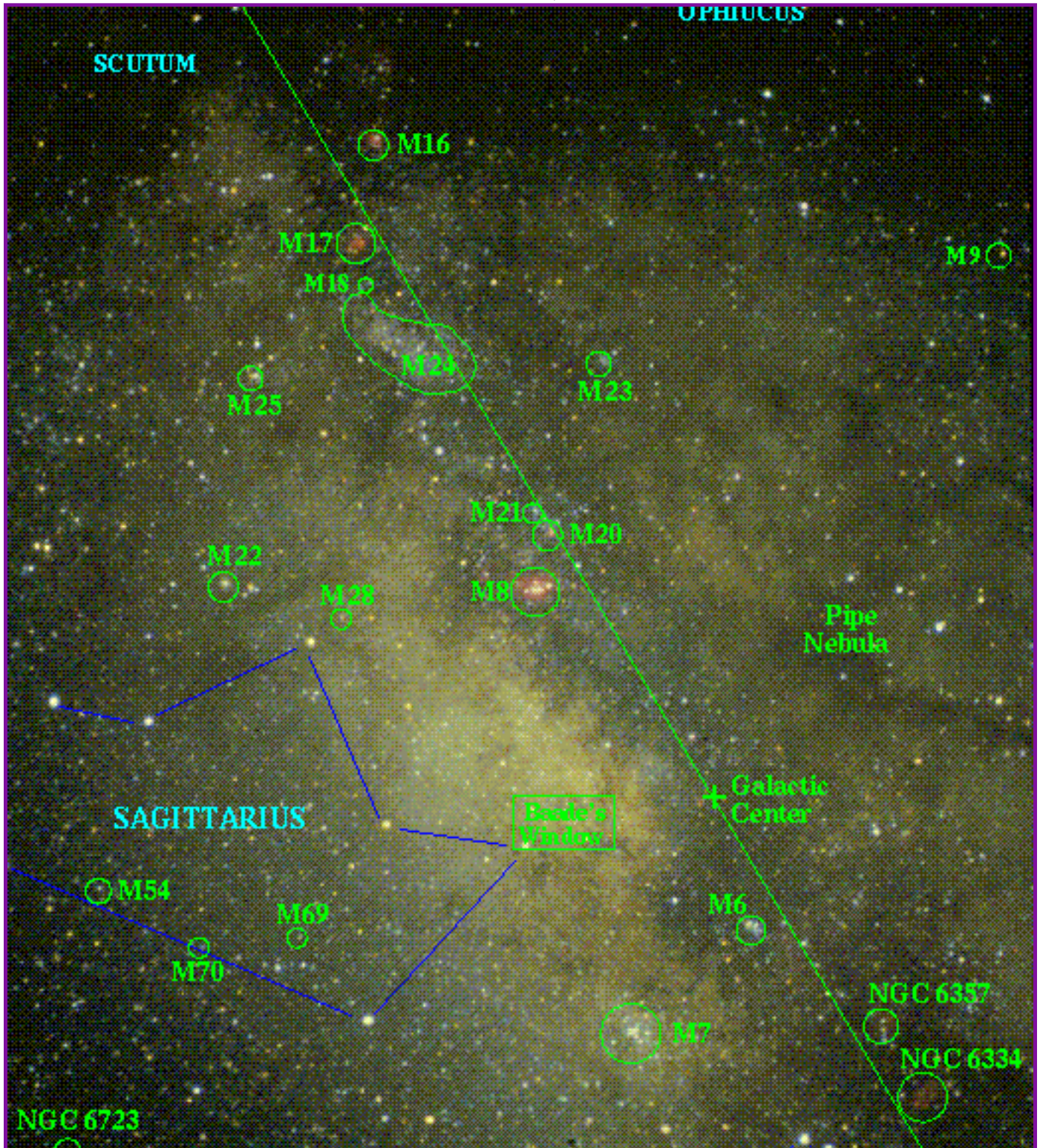
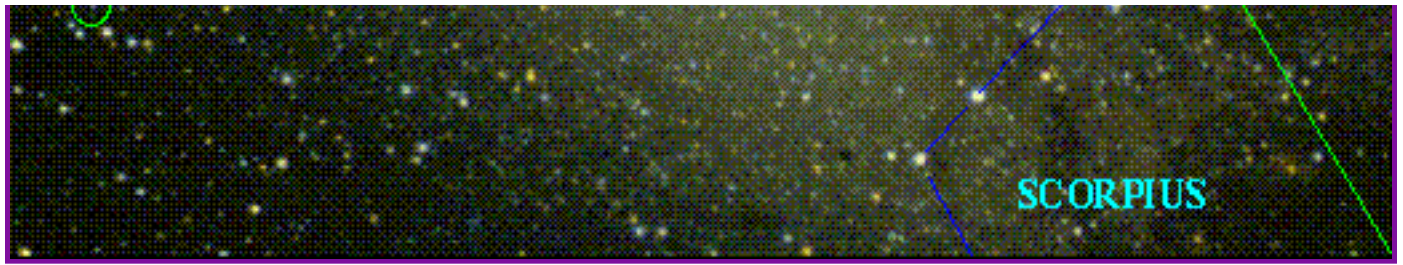


Astronomy Picture of the Day

[Discover the cosmos!](#) Each day a different image or photograph of our fascinating universe is featured, along with a brief explanation written by a professional astronomer.

November 11, 1997





The Annotated Galactic Center

Credit: W. Keel ([U. Alabama in Tuscaloosa](#)), Cerro Tololo, [Chile](#)

Explanation: The sky toward the center of [our Galaxy](#) is filled with a wide variety of [celestial wonders](#). Most are visible with only binoculars. Constellations of nearby stars include [Sagittarius](#), [Libra](#), [Scorpius](#), [Scutum](#), and [Ophiuchus](#). Nebulae include [Messier](#) Objects [M8](#), [M16](#), [M17](#), [M20](#) and the [Pipe Nebula](#). [Open clusters](#) include [M6](#), [M7](#), [M18](#), [M21](#), [M23](#), [M24](#), [M25](#). [Globular clusters](#) include [M9](#), [M22](#), [M28](#), [M54](#), [M69](#), [M70](#). And don't forget [Baade's Window](#). Click on the photo to get the un-annotated version.

Tomorrow's picture: [El Niño Earth](#)

[≤](#) [Archive](#) | [Index](#) | [Search](#) | [Calendar](#) | [Glossary](#) | [Education](#) | [About APOD](#) [≥](#)

Authors & editors: [Robert Nemiroff](#) (MTU) & [Jerry Bonnell](#) (USRA)

NASA Technical Rep.: [Jay Norris](#). [Specific rights apply](#).

A service of: [LHEA](#) at [NASA/ GSFC](#)

&: [Michigan Tech. U.](#)